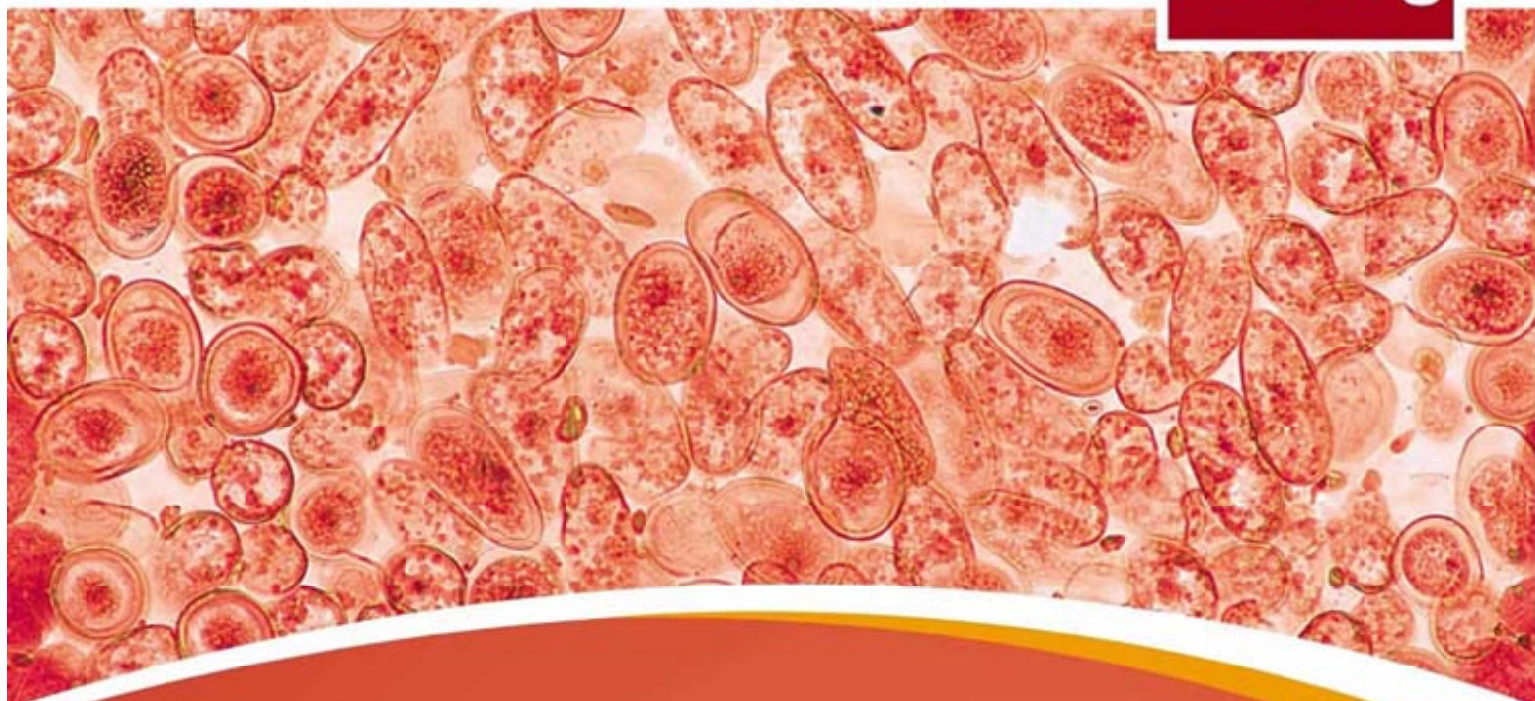


▪ Instant ▪ Noticeable ▪ Trustful ▪ Effective ▪ Convenient

**HBsAg**



## **One Step HBVs Test Profile**

*Rapid, Visual Chromatographic Assay for Detection of HBsAg, HBsAb, HBeAg, HBeAb, HBcAb, HBc-IgM*

- *Unique six tests profile*
- *Two tests available: serum or plasma test; whole blood, serum or plasma test*
- *High sensitivity and specificity for immunization screening*
- *Low detection limits for HBsAg and HBsAb tests*
- *Multiple independent clinical studies including WHO, Geneva*



190 Middle Road  
#19-05 Fortune Centre  
Singapore 188979  
Tel: +65 8368 0800  
Fax: +65 66185220  
[www.jalinnovation.com](http://www.jalinnovation.com)



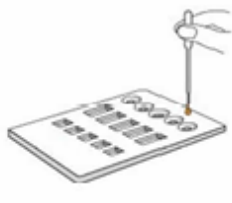

**JAL** Innovation

## One Step Multi-HBV's Test

Rapid, Visual Chromatographic Assay for Simultaneous Detection of HBV's Panel(HBsAg, HBsAb, HBeAg, HBeAb and HBcAb)

- unique device allows a simultaneous detection of multiple HBVs with single sampling procedure and clear interpretation of results

## Test Procedures

|  |  |  |   |
|--|--|--|---|
| <p>For serum/plasma tests</p>  <p>Apply sample to sample well</p> | <p>For whole blood/serum/plasma tests</p>  <p>Apply sample to sample well</p> | <p>For Multi-HBV's tests</p>  <p>Apply sample to sample well</p> | <p>Read results</p>  <p>*Refer to product inserts for each assay time.</p> |
|--|--|--|---|

## Result Interpretation

|  |  |
|--|--|
| <p>For HBsAg<br/>HBsAb<br/>HBeAg<br/>HBeAb<br/>HBc-IgM</p> | <p>For HBeAb<br/>HBcAb</p>                     |
| <p>Control Band</p> <p>Test Band</p>                       | <p>Control Band</p> <p>Test Band</p>           |
| <p>Positive</p> <p>Negative</p> <p>Invalid</p>             | <p>Positive</p> <p>Negative</p> <p>Invalid</p> |

## More Rapid Diagnostic Products Available

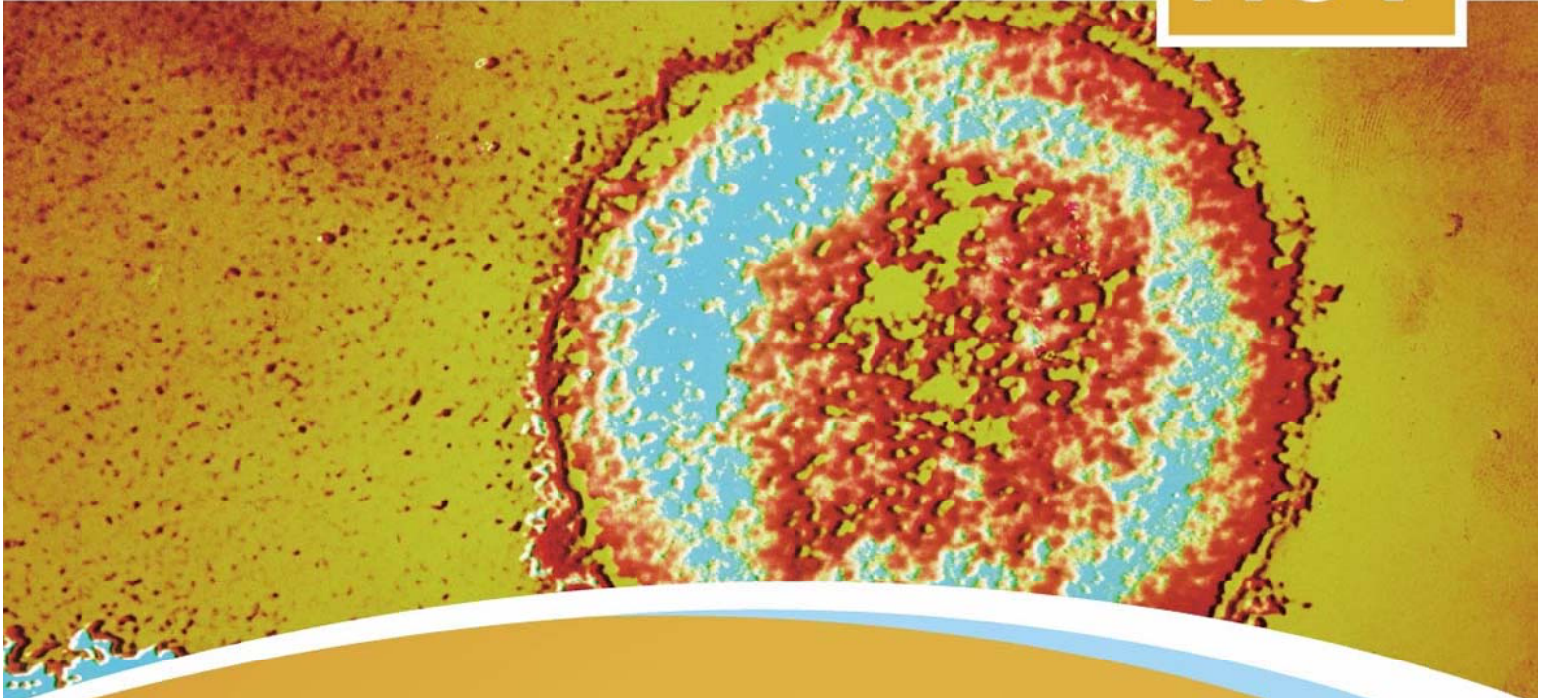
HBVs,HIV,HCV,Drugs of Abuse ,Syphilis,PSA,AFP,Pregnancy(HCG), Ovulation(LH),Cardiac Troponin I,TB,Malaria,H.pylori,Dengue,TOXO.

**5 Seconds Blood Glucose Monitoring System **NEW****

**Blood Grouping Test **NEW****

▪ Instant ▪ Noticeable ▪ Trustful ▪ Effective ▪ Convenient

# HCV



## Rapid Anti-HCV Test

*Rapid, Visual Chromatographic Assay for Detection of HCV Antibodies*

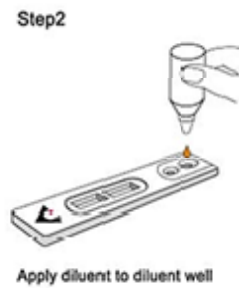
- Two tests available: serum or plasma test; whole blood, serum or plasma test
- Sensitivity: 100%
- Specificity: >99.8%
- Panel confirmation: 100%
- Less than 1 minute hands-on time
- Multiple independent clinical studies including WHO, Geneva
- The first commercial kit available in China



190 Middle Road  
#19-05 Fortune Centre  
Singapore 188979  
Tel: +65 8368 0800  
Fax: +65 66185220  
[www.jalinnovation.com](http://www.jalinnovation.com)

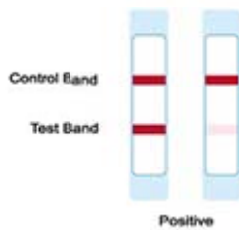
**JAL** Innovation

## Test Procedures



results in 20 min.

## Result Interpretation



## More Rapid Diagnostic Products Available

HBVs, HIV, HCV, Drugs of Abuse, Syphilis, PSA, AFP, Pregnancy (HCG), Ovulation (LH), Cardiac Troponin I, TB, Malaria, H. pylori, Dengue, TOXO.

5 Seconds Blood Glucose Monitoring System **NEW**

Blood Grouping Test **NEW**

# iCARE

# HIV 1&2 RAPID SCREEN TEST

Whole blood / Serum / Plasma



## FOR FIELD & HEALTH CARE PROFESSIONAL USE

- Sensitivity >99%
- Specificity >99%
- Panel Confirmation 100%
- Detect HIV 1&2 and HIV 1 subtype "O"
- Medical advancement: Anti HIV Triline Test & HIV 1&2 Oral Rapid Test
- Less than 1 min hands on time
- Multiple independent parties evaluation including WHO

GMP

ISO 13485



Product of JAL Innovation Singapore

**JAL** Innovation

[www.jalinnovation.com](http://www.jalinnovation.com)



# HIV 1&2 RAPID SCREEN TEST

Whole blood / Serum / Plasma

## ANTI - HIV TEST (WHOLE BLOOD / SERUM / PLASMA)

- Detect HIV Ab in whole blood / serum / plasma
- Detect HIV 1 & 2, and HIV 1 subtype "O" in whole blood / serum / plasma
- Detect antibodies of all subtypes (IgM, IgG, IgA)

## ANTI - HIV TEST (URINE)

- Detect HIV Ab in urine
- Urine sample, require only 10 µl
- The safest method. No risk of infection

### TEST PROCEDURES:

For Sandwich method (whole blood) & Captive method (urine / whole blood / serum / plasma)

STEP 1  
Apply specimen into the well



STEP 2  
Add 2 drops diluent into well



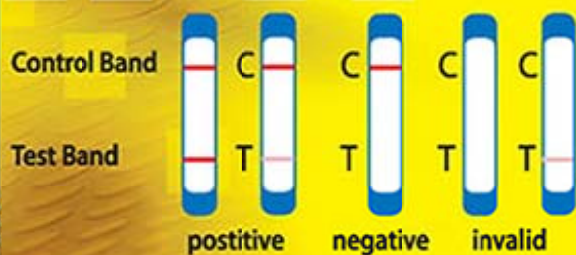
For Sandwich method (serum / plasma)

Apply specimen into the well

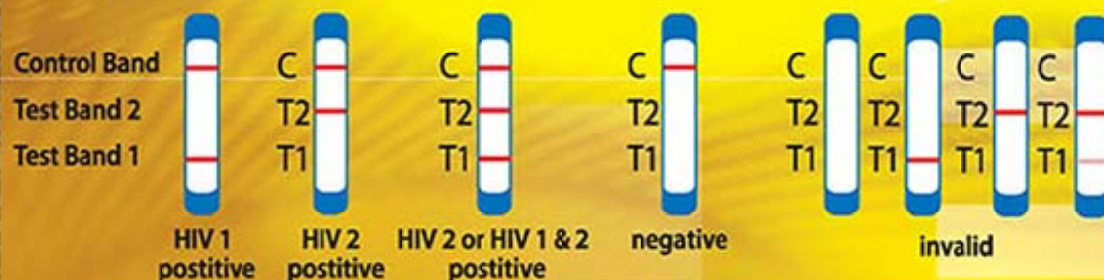


RESULT INTERPRETATION:

### For One Step Anti-HIV Test



### For One Step Anti-HIV Tri-line Test



Read result at 15 minutes  
Refer to product inserts for each assay time

\* Please refer to instruction insert for detailed testing procedures

GMP

ISO 13485



Product of JAL Innovation Singapore

www.jalinnovation.com

# iCARE



Product of:

**JAL** Innovation

190 Middle Road  
#19-05 Fortune Center  
Singapore 188979  
Website : [www.jalinnovation.com](http://www.jalinnovation.com)